



# CLEVE HILL SOLAR PARK

## RESPONSES TO THE EXA'S WRITTEN QUESTIONS - APPENDICES

### **Appendix 15 – Updated Photomontages at Viewpoint 22 at Years 1, 5 and 10**

June 2019  
Revision A

Document Reference: 10.1.1  
Submitted: Deadline 2

[www.clevehillsolar.com](http://www.clevehillsolar.com)



**CLEVE HILL**  
SOLAR PARK





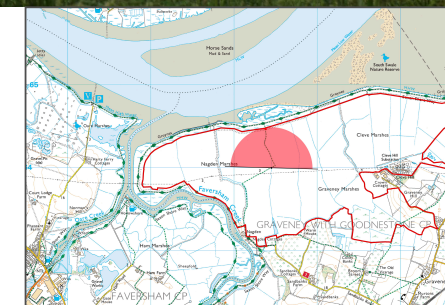
View at a comfortable arms length

OS reference: 603457 164017  
Approximate AOD: 1.2m AOD  
Direction of view: 1.57°  
Distance to CLSA: 0m  
Horizontal field of view: 180°  
Principal distance: 500mm  
Paper size: 1682 x 297 mm  
Correct printed image size: 1640 x 220 mm  
Camera: Nikon D5  
Lens: 50mm f1.8D  
Camera height: 1.6m  
Date and time: 09/07/2018 13:10

\*CLSA\* - Core Landscape Study Area



Photomontages at Year 5 - Summer - **Figure: 7.122**  
Viewpoint 22: Public Right of Way (ZR485) through Site (Looking north)  
Cleveland Hill Solar Park Environmental Statement







View at a comfortable arms length

OS reference: 603457 164017  
Approximate AOD: 1.2m AOD  
Direction of view: 181.57°  
Distance to CLSA: 0m

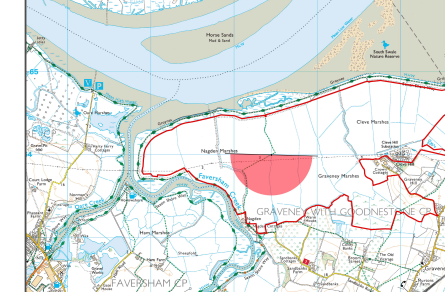
Horizontal field of view: 180°  
Principal distance: 500mm  
Paper size: 1682 x 297 mm  
Correct printed image size: 1640 x 220 mm

Camera: Nikon D5  
Lens: 50mm f1.8D  
Camera height: 1.6m  
Date and time: 09/07/2018 13:10

\*CLSA\* - Core Landscape Study Area



Photomontages at Year 5 - Summer - **Figure: 7.123**  
Viewpoint 22: Public Right of Way (ZR485) through Site (Looking south)



Cleve Hill Solar Park Environmental Statement